



BRASS CAR SIDES

Passenger Car Parts for the Streamliners



Union Pacific Challenger Coach
5331-5365
HO 173-31 \$31.75



Milwaukee Road Olympian Hi
Touralux-Coach 5770-75
N 173-566 \$24.75



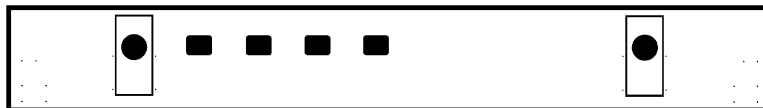
Union Pacific Baggage-Mail
UP 5900-02, C&NW 8225-26
GN 37-44
HO 173-43 Discontinued



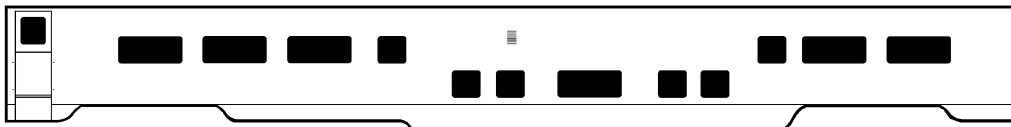
Union Pacific ACF Dome Diner
UP8000-8009, Kato N overlay
Rivarossi HO Dome overlay
HO 173-22 Discontinued
N 173-522 \$20.75



Union Pacific ACF Dome Lounge UP 9000-9014 one-piece sides/end to overlay Kato N dome coach. Mid-train version (end windows blanked): 173-526 \$20.75. Tail-end version: 173-536 \$20.75. HO version discontinued in 2009.



Milwaukee Road 60' Postal Car
2152-53 with HO door pieces
HO 173-59 \$36.75
N 173-559 \$20.75



Pullman-Standard Dome for
Wabash 1602, MP, B&O, N&W,
IC, SR, CofG. Smoothside.
HO 173-64 \$31.75
N 173-564 \$21.75



C&E/L&N/NCSt.L 6-4-6 "Pine"
PS Sleeper Plan 4183
HO 173-35 \$31.75

GN Baggage-Mail 3' Doors (pair) HO 173-300 \$5.75	GN Baggage-Mail 5' Doors (pair) HO 173-301 \$5.75	Milwaukee Road 3' RPO Doors (pair) HO 173-302 \$5.75	Milwaukee Road 8' Baggage Doors HO 173-303 \$5.75	NP Water-Baggage 5' Doors (pair) HO 173-304 \$5.75	NP Water-Baggage 7' Doors (pair) HO 173-305 \$5.75

