



# BRASS CAR SIDES

Passenger Car Parts for the Streamliners



Union Pacific Challenger Coach  
5331-5365  
HO 173-31 \$31.75



Union Pacific 44-seat Coach  
UP 5450-87, C&NW 3477-82  
GN 1000-07, SP 2111-15, GTW  
HO 173-40 \$31.75



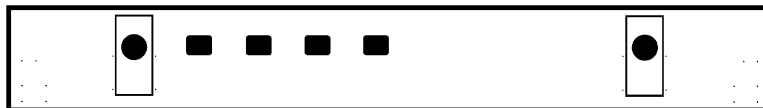
Union Pacific Baggage-Mail  
UP 5900-02, C&NW 8225-26  
GN 37-44  
HO 173-43 \$36.75



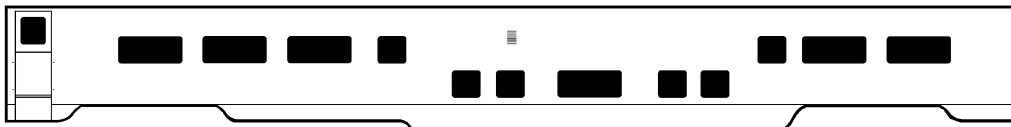
Union Pacific ACF Dome Diner  
UP8000-8009, Kato N overlay  
Rivarossi HO Dome overlay  
HO 173-22 \$31.75  
N 173-522 \$20.75



Union Pacific ACF Dome Lounge UP 9000-14 one-piece sides/end to overlay Rivarossi HO or Kato N dome coach. Mid-train version (end windows blanked): HO 173-26 \$37.25 and N 173-526 \$20.75. Tail-end version: HO 173-36 \$37.25 and N 173-536 \$20.75.



Milwaukee Road 60' Postal Car  
2152-53 with HO door pieces  
HO 173-59 \$36.75  
N 173-559 \$20.75



Pullman-Standard Dome for  
Wabash 1602, MP, B&O, N&W,  
IC, SR, CofG. Smoothside.  
HO 173-64 \$31.75  
N 173-564 \$21.75



C&E/L&N/NCSt.L 6-4-6 "Pine"  
PS Sleeper Plan 4183  
HO 173-35 \$31.75

GN Baggage-Mail 3' Doors (pair) HO 173-300 \$5.75	GN Baggage-Mail 5' Doors (pair) HO 173-301 \$5.75	Milwaukee Road 3' RPO Doors (pair) HO 173-302 \$5.75	Milwaukee Road 8' Baggage Doors HO 173-303 \$5.75	NP Water-Baggage 5' Doors (pair) HO 173-304 \$5.75	NP Water-Baggage 7' Doors (pair) HO 173-305 \$5.75



BRASS CAR SIDES, 715 S. 7th St., St. Peter, MN 56082 [www.brasscarsides.com](http://www.brasscarsides.com)  
Revised 7-14-08

