



# THE MILWAUKEE ROAD

Route of the Super Dome Hiawathas and  
The Western "Cities" Domeliners



## BRASS CAR SIDES

### *Passenger Car Parts for the Streamliners*

75' RPO-Express 1208-1230 [#173-52]; 75' Express 1317-1329 [#173-54]  
75' Baggage-Dorm 1309-14 [173-57]; "Mountain" Touralux Sleeper 5740-51 [#173-58]  
Tap-Lounge/Lunch-Lounge 162-67, 172-73 [#173-53]; Diner 115-126 [#173-55]

The Milwaukee Road built all of these cars in its Milwaukee shops in 1947-48. The 1208-30 RPO-express cars provided a 30' mail compartment, but in the 1960's many were rebuilt with a 60' mail area, and renumbered in the 2100-series. Contemporaries of these cars were six 18-seat diner/26-seat lounge cars built for the *Olympian Hiawatha* as "Tip-Top Grill" cars, followed by another pair built in 1948 for the *Afternoon Hiawatha* and called "Tap-Lounge" cars. The 40-seat dining cars for the post-war *Olympian Hiawatha* were numbered 115-120, and 121-126 for the *Twin Cities* and *Chippewa Hiawathas*. The 48-seat diner-lounge cars 170-71 had the same window and door layout as the full diners. All of these cars ultimately served throughout the system, with some, particularly the baggage-dorms running in the Union Pacific trains after October, 1955. The HO 3' mail and 8' express doors supplied with the headend cars are available separately. The "Grove" cafe-parlor and 2152-53 60' postal car sides were added to our line in June of 2006.

#### REFERENCES

Milwaukee Road Color Guide to Freight & Passenger Equipment, Stauss (Morn. Sun). Excellent color photos on pp. 16, 33, 34, 39 and 40.  
Passenger Cars Vol. 2, by Hal Carstens (Carstens). Plans and photos for coach (p. 132); tap-lounge (p. 194); parlor (p. 145); baggage-dorm (p. 123)  
Passenger Cars Vol. 3, by Hal Carstens (Carstens). "Touralux" (p. 240)  
"Modeling Milwaukee Road's Tip Top Tap Cars", Jeff Kehoe, *The Milwaukee Railroader*, Third Quarter, 2003 (pp. 40-41). See also Jim Scribbins' photo article in 2nd Quarter *TMR* (pp. 32-39).  
Yahoo Groups MILW and N\_Milwaukee\_Road. See pdf file of Drawings by Rick De Karske of 1947-48 *Hiawathas* in archives. Great color side illustrations in UP scheme.  
The Hiawatha Story by Jim Scribbins (University of Minnesota Press, 2007)  
Milwaukee Road in Color Vols. 1-4 by several authors (Morning Sun)  
Milwaukee Road Remembered by Jim Scribbins (Kalmbach, 1990)  
The Union Pacific Streamliners by Ranks and Kratville (Kratville, 1974)  
Streamliner Cars Vol. I & III P-S/Others by David Randall (RPC Pub., O.P.)  
Walthers produced O-scale kits for the *Morning*, *Afternoon*, and *Olympian Hiawathas* and these sides are partly based on those plans. Send a large two-stamp SSAE for free photocopies of any of the above drawings.

#### RECOMMENDED CONSTRUCTION TECHNIQUES

These side sets are designed to be used with our Basic Body Kit No. 173-101 or Deluxe Body Kit No. 173-102, or with the Train Station Products No. 807 P-S/ACF Core Kit. The roof and floor of either body/core kit must be shortened to match the 75' sides. However, we have specifically engineered the lounge, Touralux, and diner sides to match the 82'4" length of the TSP core kit with minor adjustment. The Eastern Car Works No. 1200 core kit could also be used with either side set, and shortened appropriately. Both BCS kits consist of basswood roof, cast ends (pewter or brass), and floor (basswood or copper-clad pc board). The instructions enclosed with the body kits cover the basic steps for building the car body. The three head-end cars include one or two pairs of 3' and 8' or four 8' brass doors, which are designed to be mounted behind the door openings. The flush door feature on the passenger car sides is represented by an etched outline.

DECALS, PAINTS AND DETAIL PARTS

<u>Paint Color</u>	<u>Floquil</u>	<u>Scalecoat</u>	<u>Accupaint</u>	<u>Modelflex</u>	<u>Polly Sc</u>
Milwaukee Orange	110162		15 (?)	1642	414152
Passenger Maroon			35	1643	414155
Black for roofs	110017	10	62	1604	414140
UP Armour Yellow	110166	22	67	1624	414170
UP Harbor Mist Gray	110167	32	68	1625	414176

<u>Decal Mfg.</u>	<u>Gold on Mar/Or/Mar</u>	<u>Mar on Or/Mar</u>	<u>Red on Yellow/Gray</u>
Walthers	43820 (Olympian)	43810	43840
Walthers	43850 (Twin)	43830, 43860	
Champ	PH-54G	PH-54M	PH-113, S-89
Chartpak			red 1/32" stripes

The availability of detail parts for lightweight passenger cars continues to improve, although some distinctive Milwaukee Road details are hard to find. We refer the modeler to Detail Associates (DA), Eastern Car Works (ECW), Custom Finishing (CF), American Limited Models (ALM), Precision Scale (PS), Train Station Products (TSP), Great Western Passenger Car Details, and Bill's Narrow Gauge Shops. The Walthers HO Reference Book, manufacturer web sites, Yahoo groups, and your dealer are your best sources of information. We particularly call your attention to: TSP #460 underbody parts, CF Nos. 292 & 293 roof and underbody kits, ALM #9000 diaphragms, CS #353 genemotor, roof hatch (Styrene .015"x5.5"x4' HO), trucks (TSP #499, MDC #2935, Railway Classics or Shoreham Shops brass brass Nystrom 7' and 8' wheelbase, Central Valley #139 or #140, as available). The grabiron holes are spaced prototypically, and therefore commercial grabirons are not an exact match. We recommend using small-diameter brass wire. The sides for the Tap-Lounge are identical, except for the service door on the outside of one of them. Note that the single circular window is at the right end facing either side.



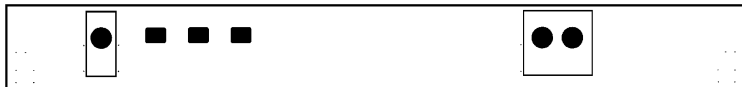
Tap-Lounge side view



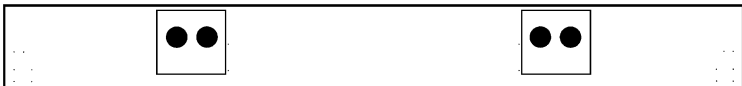
Touralux side view



Dining Car kitchen side



RPO-Express side view



Express-Baggage side view



Baggage-Dorm side view

We regret that we aren't able to provide more information about roof and underbody details, or plans (beyond the Walthers O-scale photocopies).

To receive our combined HO and N-scale catalog, reservation sheet, and current bulletin, please send a SSAE to: **BRASS CAR SIDES**, 715 S. 7th St., St. Peter, MN 56082. Dealer terms are available. Address e-mail to [dchenry@gac.edu](mailto:dchenry@gac.edu). See our web pages at [www.brasscarsides.com](http://www.brasscarsides.com). Revised June 10, 2007.